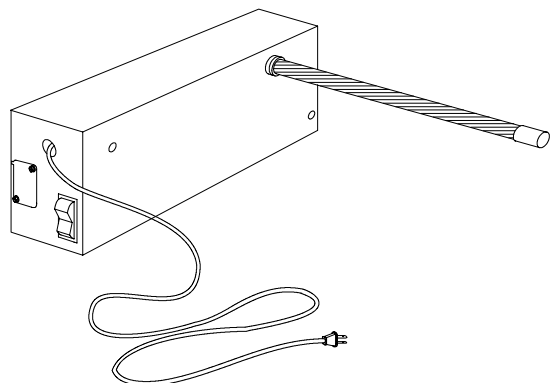
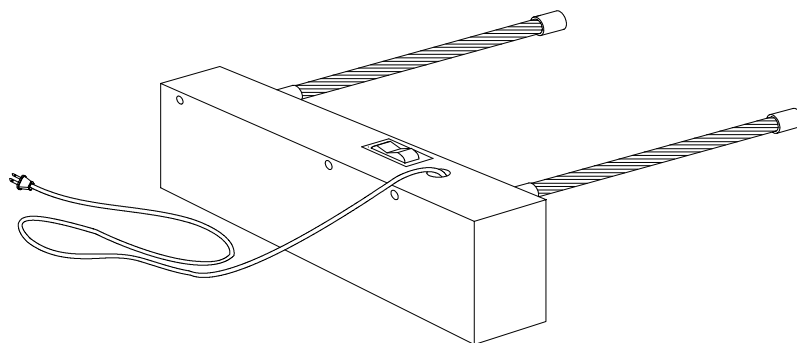


INSTALLATION, OPERATION, & MAINTENANCE INSTRUCTIONS

Dual and Single UV lamp Systems for Indoor Coils & Drain Pans



Models: UVICA1LPA, UVICK1LPA



Models: UVICA2LPA, UVICK2LPA

These instructions must be read and understood completely before attempting installation.

CAUTION 1: TURN ALL POWER OFF. NEVER EXPOSE EYES OR SKIN TO UVC LIGHT FROM ANY SOURCE - WEAR GLOVES, FACE SHIELD (per ANSI Z87.1) AND COVER ALL EXPOSED SKIN. DO NOT TOUCH GLASS WITHOUT GLOVES. CLEAN LAMP WITH RUBBING ALCOHOL AND CLEAN CLOTH, IF NECESSARY.

CAUTION 2: INSTALL LAMP BEFORE APPLYING POWER. FAILURE TO DO SO WILL TRIGGER THE "END-OF-lamp-LIFE CIRCUIT" AND THE LAMP WILL FAIL TO LIGHT! IF THIS HAPPENS SHUT OFF POWER FOR 10 MINUTES AND TURN POWER BACK ON. LAMP WILL LIGHT.

Safety Considerations

Improper installation, adjustment, alteration, service, maintenance, or use can cause fire, electrical shock, or other conditions which may cause personal injury or property damage. Consult a qualified installer, service agency, or your supplier for information or assistance.



CAUTION

UNIT DAMAGE HAZARD

Do not touch lamp glass without gloves. Damage to lamp may result. Oil from fingerprints will permanently etch glass of lamp and weaken structure. Clean lamp after handling.

Failure to follow this caution may result in damage to the product.



CAUTION

UNIT DAMAGE HAZARD

Use only specified high-output, low-temperature lamps with this product. Use of a lower wattage or incorrect lamp may result in damage to product or lamp.



CAUTION

MERCURY EXPOSURE HAZARD

Lamp contains a small quantity of mercury. If a lamp breaks, clean and dispose of with care.

Failure to follow this caution may result in minor personal injury.

The qualified installer or agency must use factory kits or accessories when installing this product. Refer to the individual instructions packaged with kits or accessories when installing them.

Follow all safety codes, wear safety glasses (per ANSI Z87.1) and work gloves. Read all instructions thoroughly and follow any warnings or cautions attached to any accessed area.



WARNING

ELECTRIC SHOCK HAZARD

Failure to follow safety warnings exactly could result in serious injury, death, and/or property damage.

Turn Off All Power Before Servicing.



WARNING

EYE & SKIN BURN HAZARD.

Never expose eyes or skin to ultraviolet light from any source. Personal injury could result.

After installation, provide an interlock to turn off germicidal lamps when access door is opened. Lamp must be off before entering HVAC unit to perform maintenance or service.

Failure to follow this warning could result in personal injury.

Consult local building codes and the National Electrical Code (NEC) for special requirements.

Understand the signal words DANGER, WARNING or CAUTION. These words are universally used for overall safety. DANGER identifies the most serious hazards, which will result in severe personal injury or death. WARNING signifies hazards, which could result in personal injury or death. CAUTION is used to identify unsafe practices, which would result in minor personal injury or product and property damage.

GENERAL

ICP’s ultraviolet germicidal lamps are designed to kill odor causing bacteria and mold that may develop in a HVAC unit. The UV lamp system is designed to destroy fungus and microbial growth when applied to the indoor coil/drain pan area of a central cooling system. The lamps will also reduce airborne viruses and bacteria generated in the occupied space. The lamps should be mounted on a flat metal surface. Lamps are designed to operate for **one year** continuously before replacement is required. The UV lamps are designed for indoor use only.

These instructions cover the installation of single and dual lamp models.

INSTALLATION:


When choosing the site, make sure that it can be supplied with the necessary power requirements and suitable physical access for service.

Consult all applicable codes before installing. Check fixture label(s) for the correct power requirements and supply the correct voltage from a suitable, protected (fused), and grounded power source.

Service accesses may be equipped with a glass or Lexan® window to view the lamps. UVC energy does not penetrate common glass or Lexan®.

Determine the most desirable location for the intended use and install reflecting material (not included).

NOTE: No testing has been done to determine the effects of UV light on duct board or flex duct, metal duct is recommended.



CAUTION

UNIT DAMAGE HAZARD

Do not drill into coil, Freon lines or other mechanical equipment.

Failure to follow this caution may result in damage to the unit or personal injury.

NOTE: Select a mounting location that prevents direct exposure to non-fiberglass media filters. A minimum distance of 6 ft. is recommended.

Using the fixture base as a template, scribe and then create one insertion hole, 1” diameter on the mounting surface for the lamp. Drill suitable holes for each fastener (unless using self-tapping screws). Using the proper #10 fastener for your application, install fixture(s) and wire in accordance with the applicable code.

NOTE: Install lamp before applying power. Failure to do so will trigger the “end-of-lamp-life circuit” and the lamp will fail to light!

If this happens, shut off power for 10 minutes, and reapply power. Lamp will light.

Insert lamp into the fixture without touching glass with bare hands and clean using 99% isopropyl alcohol and a lint free wipe. Make sure the “O” ring is pushed onto the white ceramic base of the lamp. Release the holding spring on the fixture base, lift it up and install the lamp by grasping the white base. Carefully push the lamp through the fixture into the plenum until seated. Hold in and lock in place by affixing the spring wire fastener to its lances. Push on the power plug while noting the rectangle orientation of the pins. Do not force. Rotate 90 degrees if necessary.

Test all circuits and turn system on. A “blue hue” will glow from each lamp indicating that each fixture is working. Caution: View only with all skin covered and use a full face mask (per ANSI Z87.1).

Affix the included “Lamp Change Service Label” in plain sight to the A/C unit. Protect labels against poor conditions if necessary and replace when worn.

OPERATION AND MAINTENANCE

Lamps should operate all the time. It is not recommended to cycle the lamps by time clock or fan operation.

Lamps need periodic replacement to maintain design output. The change out basis depends on the application, number of times switched per day and/or hours of operation.

A UVC Radiometer can monitor UVC output to determine lamp change-out. Replace lamp when output falls to 50% of initial output.

If a radiometer is not available, lamp(s) should be replaced after no more than 9,000 hours of continuous use or annually.

TROUBLESHOOTING

SYMPTOM

RECOMMENDED ACTION

Lamp does not light	1. Turn off power for 10 minutes, and then turn power back on. 2. Replace lamp. Normal replacements recommended once per year. 3. Check line voltage. 4. Check wiring to lamp. 5. Replace power supply.
Low Output (Radiometer Reading) or Visibly weak light	1. Replace lamp. 2. Check line voltage. 3. Check wiring to lamp.

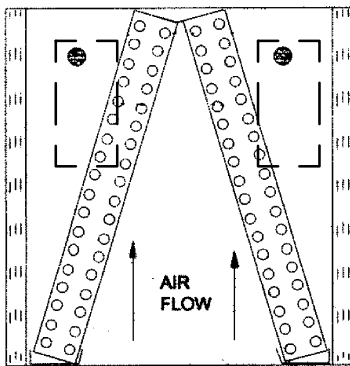
SPARE OF REPLACEMENT PARTS

DESCRIPTION	PART NO.	
	<u>Single lamp</u>	<u>Dual lamp</u>
POWER SUPPLY 115/208/230V	45000101	45000102
SPRING	11000104	11000104
SWITCH, ROCKER	11000112	11000112
SWITCH, INTERLOCK	11000113	11000113
lampS (20 inch, High Output)	UVICXRPLA (All Voltages)	

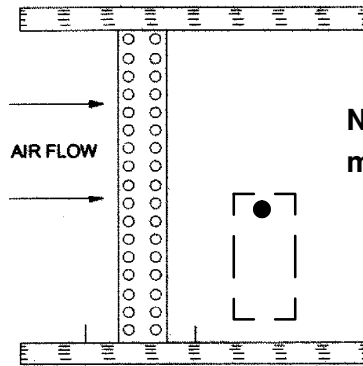
MODEL NUMBER IDENTIFICATION GUIDE

MODEL NUMBER	UVIC	A	1LP	A
UV Lamp				Series
Voltage				1LP = Single Lamp
A = 115v				2LP = Dual Lamp
K = 208/230v				

Single Lamp Systems

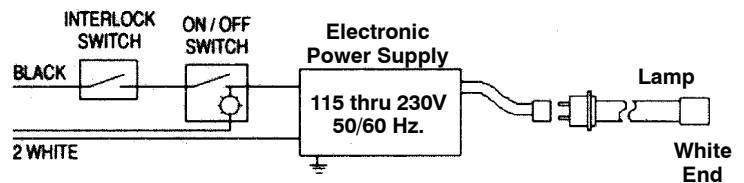
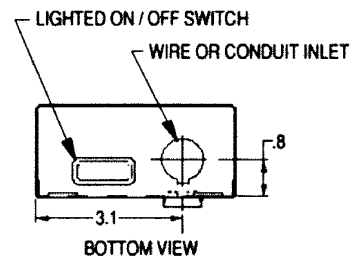
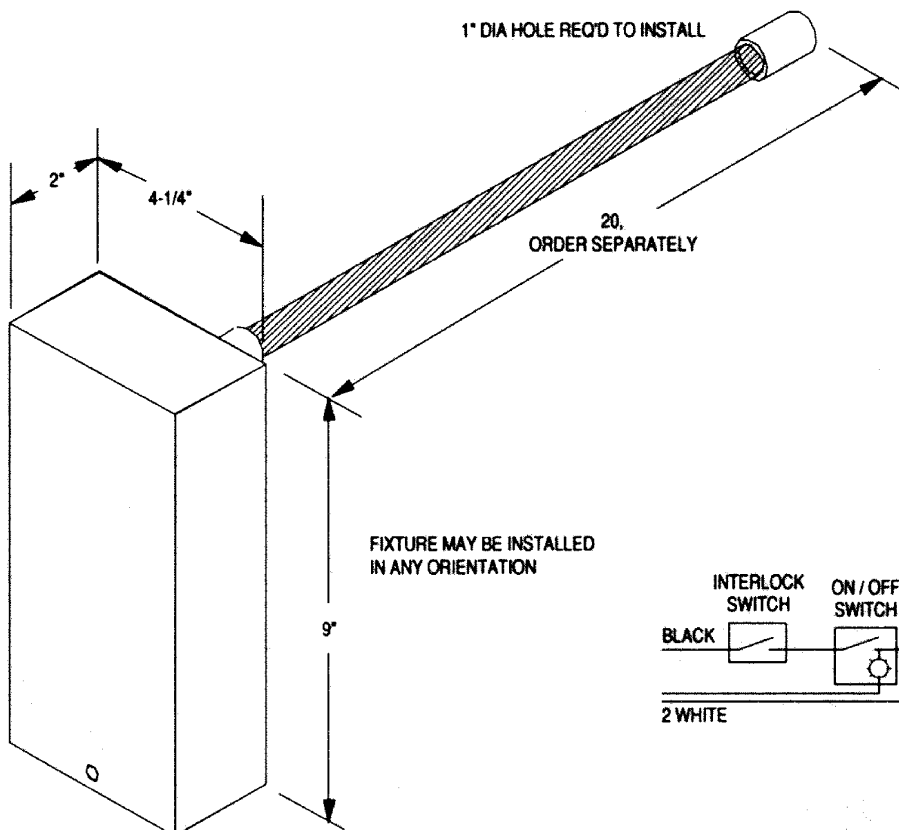


Large A-Coil



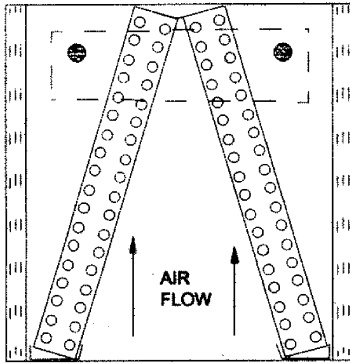
Slab Coil

Note: Optimal distance is 12 - 18 inches maximum from coil/drain pan.

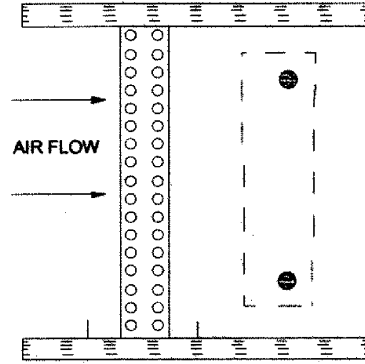


Models: UVICA1LPA, UVICK1LPA

Dual Lamp Systems

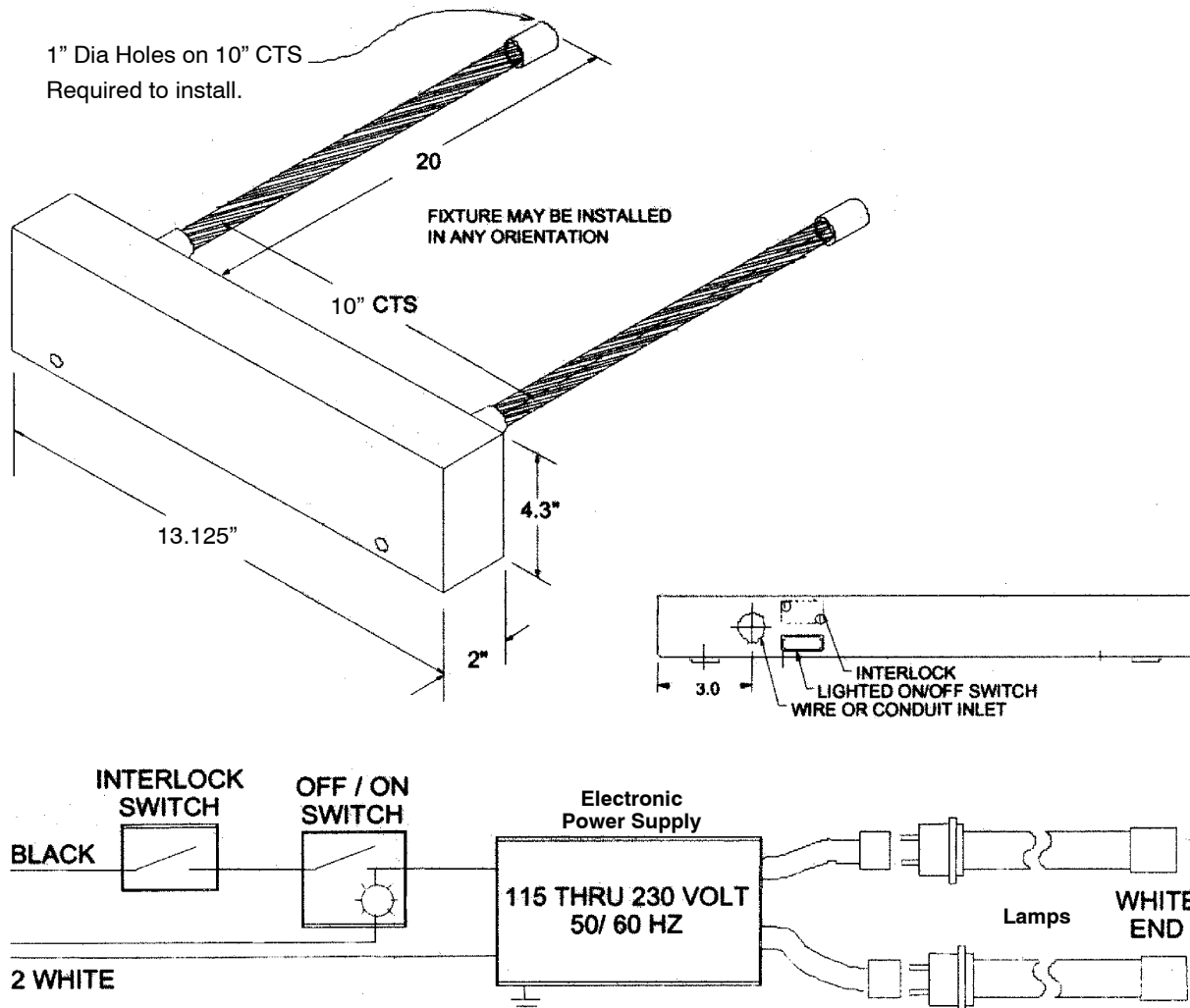


Small A-Coil



Slab Coil

Note: Optimal distance is 12 - 18 inches maximum from coil/drain pan.



Models: UVICA2LPA, UVICK2LPA

WARRANTY

Five-Year Limited Warranty – The power supply on this product is warranted to be free from defects in material and workmanship for a period of five years from the date of original installation, whether actual use begins then or later. If the power supply does not meet this warranty, a new or remanufactured part, at the manufacturer's sole option, to replace any defective part will be provided without charge for the part itself; PROVIDED the defective part is returned to the distributor through a qualified servicing dealer.

THIS WARRANTY DOES NOT INCLUDE LABOR OR OTHER COSTS incurred for diagnosing, repairing, removing, installing, shipping, servicing or handling of either defective parts or replacement parts. Such costs may be covered by a separate warranty provided by the installer.

THIS WARRANTY APPLIES ONLY TO PRODUCTS IN THEIR ORIGINAL INSTALLATION LOCATION AND BECOMES VOID UPON REINSTALLATION.

LIMITATIONS OF WARRANTIES - ALL IMPLIED WARRANTIES (INCLUDING IMPLIED WARRANTIES OF FITNESS FOR A PARTICULAR PURPOSE AND MERCHANTABILITY) ARE HEREBY LIMITED IN DURATION TO THE PERIOD FOR WHICH THE LIMITED WARRANTY IS GIVEN. SOME STATES DO NOT ALLOW LIMITATIONS ON HOW LONG AN IMPLIED WARRANTY LASTS, SO THE ABOVE MAY NOT APPLY TO YOU. THE EXPRESSED WARRANTIES MADE IN THIS WARRANTY ARE EXCLUSIVE AND MANY NOT BE ALTERED, ENLARGED, OR CHANGED BY ANY DISTRIBUTOR, DEALER, OR OTHER PERSON WHATSOEVER. ALL WORK UNDER THE TERMS OF THIS WARRANTY SHALL BE PERFORMED DURING NORMAL WORKING HOURS. ALL REPLACEMENT PARTS, WHETHER NEW OR REMANUFACTURED, ASSUME AS THEIR WARRANTY PERIOD ONLY THE REMAINING TIME PERIOD OF THIS WARRANTY.

THE MANUFACTURER WILL NOT BE RESPONSIBLE FOR:

1. Normal maintenance as outlined in the installation and servicing instructions or owners manual including replacement of UV light bulbs.
2. Damage or repairs required as a consequence of faulty installation, misapplication, abuse, improper servicing, unauthorized alteration or improper operation.
3. Failure to start due to voltage conditions, blown fuses, open circuit breakers or other damages due to the inadequacy or interruption of electrical service.
4. Damage as a result of floods, winds, fires, lightning, accidents, corrosive environments or other conditions beyond the control of the Manufacturer.
5. Parts not supplied or designated by the Manufacturer, or damages resulting from their use.
6. Manufacturer products installed outside the continental U.S.A., Alaska, Hawaii, and Canada.
7. Electricity or fuel costs or increases in electricity or fuel costs from any reason whatsoever including additional or unusual use of supplemental electric heat.
8. ANY SPECIAL INDIRECT OR CONSEQUENTIAL PROPERTY OR COMMERCIAL DAMAGE OF ANY NATURE WHATSOEVER. Some states do not allow the exclusion of incidental or consequential damages, so the above may not apply to you.

This warranty gives you specific legal rights, and you may also have other rights which may vary from state to state.

Model No. _____

Serial No. _____ Date Installed _____

USA: International Comfort Products , LLC • 650 Heil-Quaker Avenue • P.O. Box 128 • Lewisburg, Tennessee 37091 • (931-270-4100)